

## Herman Street

Herman Street is situated between the Dunkin Donuts on Broadway and the J.L. C.B. auto repair complex. At one time Herman Street ran from Broadway to Wilson Street. At some point in time a series of bollards were installed traversing the roadway just beyond the property at twenty three Herman St which has made the roadway a dead end,

The sidewalks on the side of the Dunkin Donuts are concrete and granite curbing is in place. Both the sidewalks and curbing are in good condition. Beyond the sidewalk area is an extended driveway apron which services the duplexes at number nineteen and twenty three Herman Street.

There is no formal sidewalks on the side of the auto repair complex. Driveway aprons runs the length of the building. Beyond the driveway aprons is the entrance to the parking lot of the One Beach Street complex. A section of new sidewalk is in place with granite curbing. Concrete driveway aprons have been poured leading into parking lot.

Our only suggestions for Herman Street would be:

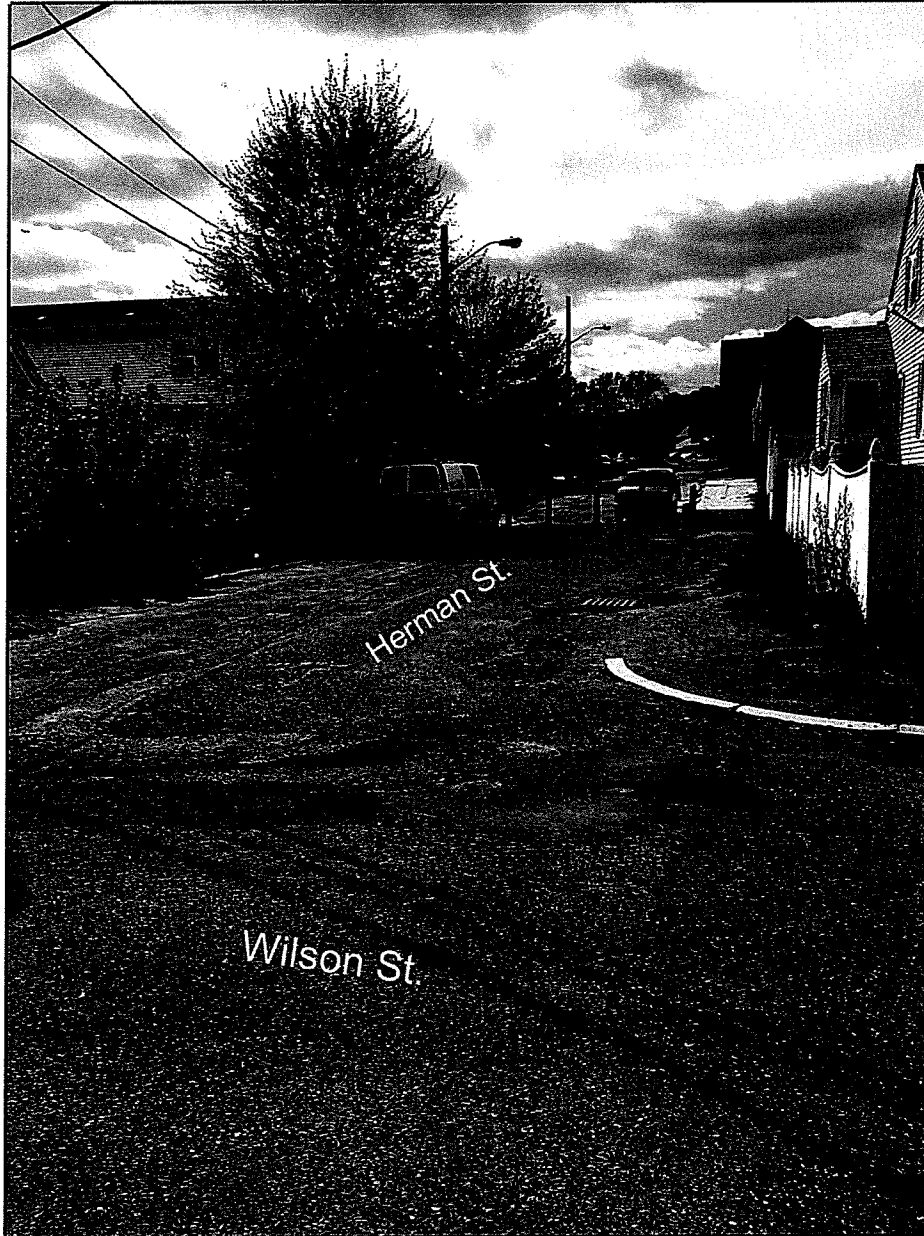
- Mill and pave the roadway

- The catchbasin installed by Neighborhood Developers might require some adjustment to re-direct the flow of surface water to the basin.

- There is a possibility that an additional catchbasin will be needed to eliminate any standing water by the bollards .

## Herman Street

Standing at Wilson St., looking west at Herman St.



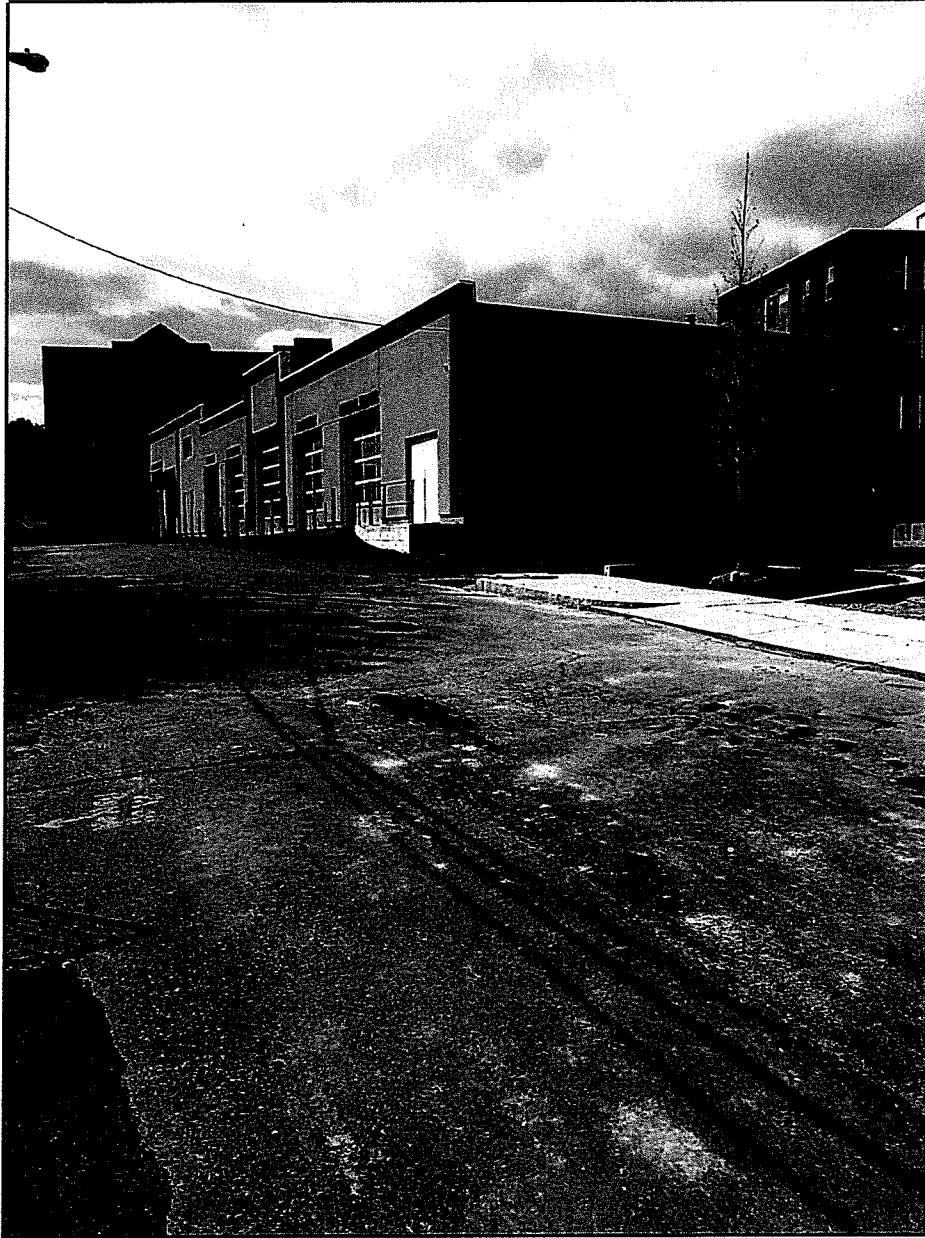
## Herman Street

At bollards looking west towards Broadway



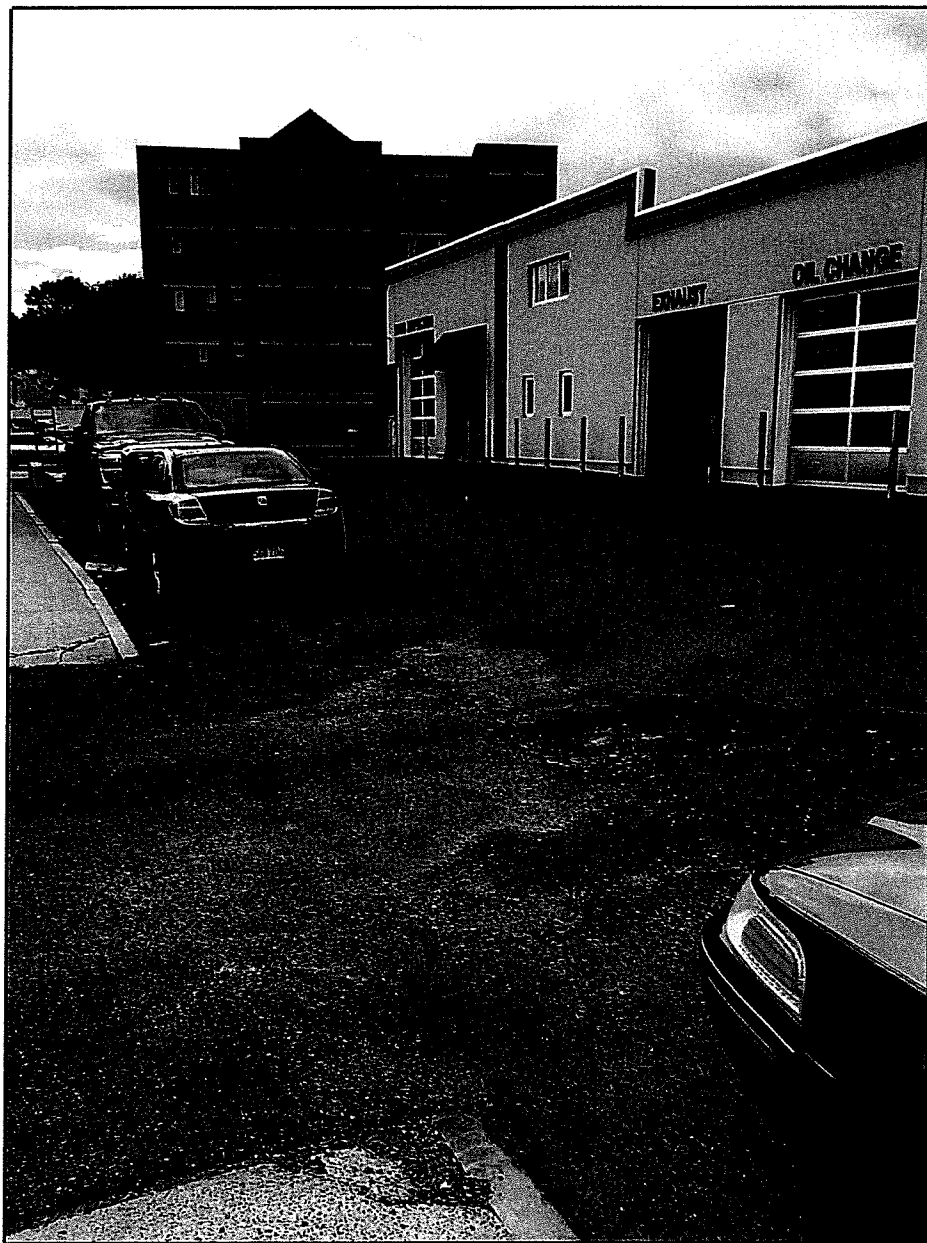
## Herman Street

Looking west towards new mechanic shop and  
Broadway



## Herman Street

At Dunkin Donuts exit driveway looking towards  
Broadway



## Herman Street

Looking east towards Wilson St.

